

# SLICE MICRO™ & SLICE NANO™

## Miniature Data Recorders

### APPLICATIONS

- Aerospace analysis
- Amusement ride testing
- Automotive safety
- Biomechanics
- Blast testing
- Embedded monitoring
- Helicopter & aircraft
- Impact testing
- In-dummy
- Injury investigation
- Parachute deployment
- Package testing: truck, air, ship & rail
- Pedestrian head & leg form
- Ride & handling
- Sound measurement
- Sports & safety equipment
- Vibration testing



SLICE MICRO and SLICE NANO are custom-configurable with 3-channel sensor input SLICEs that stack to create a standalone data acquisition system.

### Features

- Modular: SLICE modules can be stacked and daisy-chained to create the exact feature and channel combination needed. Add up to 24 channels per stack and up to thousands of channels per test.
- Intuitive, easy-to-use software
- Lightweight & extremely small
- Records up to 120 ksp/s/channel
- 7 GB non-volatile flash memory
- Supports a variety of external sensor interfaces: 3- and 4-wire bridge, MEMS sensors, strain & load, voltage, temperature, digital/frequency
- SLICE MICRO can also be configured with built-in triaxial sensor modules for acceleration, angular rate, or external IEPE (piezo-electric) sensors
- Meets NHTSA, FAA, ISO 6487 and SAE J211 data acquisition practices



SLICE is a modular data acquisition system featuring unmatched flexibility, technology and reliability in an ultra-small size. Available in two configurations, both SLICE MICRO and SLICE NANO are ideal for a variety of critical test applications.

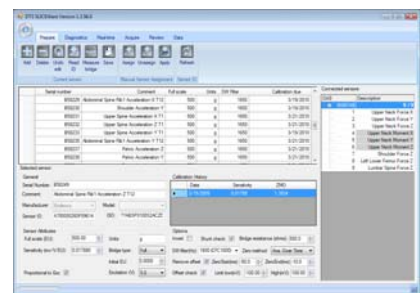
The foundation of the system is the BASE SLICE that contains the microprocessor, memory and all control circuits for managing multiple 3-channel SLICEs that can be stacked in different channel count and sensor input configurations. A simple interface provides power, trigger and communication signals for chaining multiple SLICE stacks and connecting to your PC.

SLICE MICRO data acquisition system shown in a 6-channel configuration that supports IEPE sensors.



### Software

SLICEWare set-up and control software provides fast, easy-to-use tools for storing sensor information and performing data collection. Advanced features such as automatic sensor assignment, detailed channel diagnostics, and real-time data display support successful testing and quality data every time.



### PRODUCTS

Diversified Technical Systems designs and manufactures data acquisition systems and sensors for the experienced test professional.



Advanced Measurement Solutions  
www.dtsweb.com

## Specifications



### BASE SLICE (MICRO & NANO)

Size:	MICRO 42 x 42 x 8 mm (1.65 x 1.65 x 0.32") NANO 26 x 31 x 6.5 mm (1.02 x 1.22 x 0.26")
Weight:	MICRO ~28 g (0.99 oz), NANO ~14.2 g (0.50 oz)
Connectors:	Omnetics, circular locking, 12-pin
Connectors:	MICRO integrated, NANO cable assembly

### ENVIRONMENTAL

Operating Temp.:	0 to 60°C (32 to 140°F) Call to discuss extended temperature ranges
Humidity:	95% RH non-condensing
Shock:	500 g, 4 msec half sine 5000 g option (SLICE NANO) 50,000 g option (SLICE HG)

### DATA RECORDING

Modes:	Recorder or circular buffer modes available.
Memory:	7 GB non-volatile flash per SLICE stack
Sample Rate:	Up to 120 ksp/s/channel Individual channel sample rate is determined by number of SLICES in each stack

### TRIGGERING

Hardware Trigger:	Isolated contact closure & logic-level input
Level Trigger:	Software programmable from any channel(s)

### POWER

Supply Voltage:	9-15 VDC; >11 VDC when using BATT SLICE
Current (Maximum):	100 mA. Each additional SLICE unit requires additional power (depends significantly on connected sensor load)
Power Control:	Remote power control input for on/off
Protection:	Reverse current, ESD

### SOFTWARE

Control:	SLICEWare, API
Operating Systems:	Windows® XP/Vista/7
Communication:	USB; optional Ethernet interface



### BRIDGE SLICE (MICRO & NANO)

Size:	MICRO 42 x 42 x 7 mm (1.65 x 1.65 x 0.32") NANO 26 x 31 x 5.5 mm (1.02 x 1.22 x 0.22")
Weight:	MICRO ~25 g (0.88 oz), NANO ~13.8 g (0.49 oz)
Connectors:	Omnetics, circular locking; 3 single-channel 7-pin or 1 three-channel 16-pin

### SIGNAL CONDITIONING

Number of Channels:	3 differential, programmable
Input Range:	±2.4 V (2.5 V center)
Bandwidth:	DC to 40 kHz, programmable
Gain Range:	1.0-1280, programmable
Auto Offset Range:	100% of effective input range
Bridge Support:	Software switchable completion
Shunt Check:	Emulation method

### ANALOG-TO-DIGITAL CONVERSION

Type:	16-bit SAR, one ADC per channel
-------	---------------------------------

### EXCITATION

Method:	One 20 mA current-limited source/channel
Voltage:	5.0 V
On/Off Control:	Shut down when not armed or recording Opt. pulsed excitation for low sampling rates

### POWER

Voltage:	Supplied via BASE SLICE
Current (Maximum):	110 mA with 350 ohm bridges all channels Power will vary significantly with sensor load

### ANTI-ALIAS FILTER

Fixed Low Pass:	4-pole Butterworth, standard knee frequency of 40 kHz
Adjustable Low Pass:	5-pole Butterworth set under software control, 50 Hz to 40 kHz
Overall Response:	Both filters may be used together to achieve 9-pole effective response
SAE J211:	System exceeds SAE J211 response



### IEPE SLICE (MICRO Only)

Size:	MICRO 42 x 42 x 7 mm (1.65 x 1.65 x 0.28")
Weight:	~28 g (0.99 oz)
Connectors:	10-32 coaxial (Microdot-compatible)

### SIGNAL CONDITIONING

Number of Channels:	3
Input Range:	0.5-23.5 V (12 V center)
Bandwidth:	DC to 40 kHz, programmable
Gain Options:	1 or 10, user programmable
Auto Offset Range:	100% of effective input range at gain of 1

### ANALOG-TO-DIGITAL CONVERSION

Type:	16-bit SAR, one ADC per channel
-------	---------------------------------

### EXCITATION

Method:	One 2.2 mA constant-current source/channel
Voltage:	up to 24 V
On/Off Control:	Shut down when not armed or recording

### POWER

Voltage:	Supplied via BASE SLICE
Current (Maximum):	70 mA with sensors connected to all channels

### ANTI-ALIAS FILTER

Fixed Low Pass:	4-pole Butterworth, standard knee frequency of 40 kHz
Adjustable Low Pass:	5-pole Butterworth set under software control, 50 Hz to 40 kHz
Overall Response:	Both filters may be used together to achieve 9-pole effective response



### ARS SLICE (MICRO Only)

Size:	MICRO 42 x 42 x 9 mm (1.65 x 1.65 x 0.35")
Weight:	~30 g (1.06 oz)
Number of Channels:	3
Range Options:	Triaxial, ±300, 1500, 8k, 12k, 50k deg/sec
Current (Maximum):	75 mA (power supplied via BASE SLICE)



### ACCEL SLICE (MICRO Only)

Size:	MICRO 42 x 42 x 9 mm (1.65 x 1.65 x 0.35")
Weight:	~30 g (1.06 oz)
Number of Channels:	3
Range Options:	Triaxial, ±50, 100, 500 g
Current (Maximum):	65 mA (power supplied via BASE SLICE)



### BATTERY SLICE (NANO Only)

Size:	NANO 26 x 31 x 4 mm (1.65 x 1.65 x 0.16")
Weight:	~7 g (0.25 oz)
Charge Status:	Backup battery charges when input voltage to BASE SLICE is greater than 11 VDC
Charge Time:	~15 min. from complete discharge to full charge (100 mA at input connector on Base)
Discharge Rate:	~16 seconds at 1 A ~2 minutes at 400 mA

## SERVICES

24/7 Worldwide Tech Support  
ISO 17025 (A2LA) Calibration  
Onsite Calibration & Training  
Application Consulting  
Software Integration  
OEM/Embedded Applications

## TECH CENTERS

Seal Beach, California USA  
Novi, Michigan USA  
Sydney, Australia  
Shanghai, China  
Zorge, Germany  
Tokyo, Japan



Diversified Technical Systems, Inc.  
Electric Ave., Suite 206  
Seal Beach, CA 90740 USA  
Phone: +1 562 493 0158  
Email: sales@dtsweb.com  
[www.dtsweb.com](http://www.dtsweb.com)

Specifications subject to change without notice.