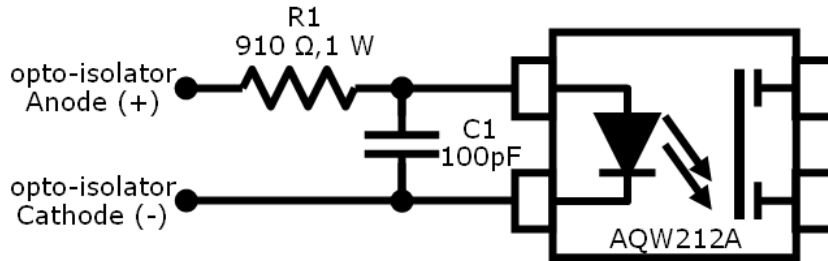


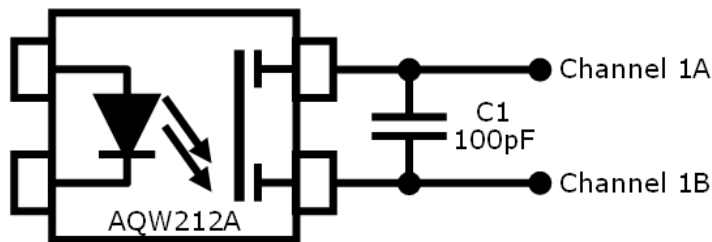
Inputs

- 8 optically-isolated channels
- Rated for 3.3-30 V input voltage for valid "INPUT" signal or on state (turn-on threshold is 1.8 V)
- Correct polarity must be observed

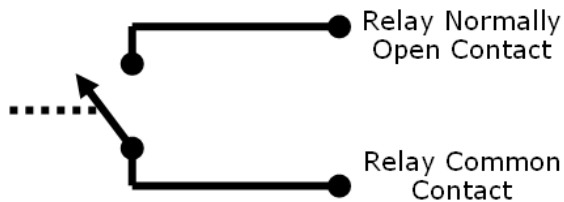


Outputs

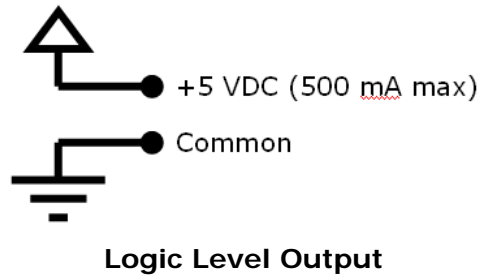
- 8 optically-isolated relays
- 1 ohm typical on resistance
- Bi-directional
- 60 V, 1 A peak current (800 mW dissipation)



Output Circuit (bi-directional contact closure)



Output Time Out Relay (closed contact during loss of signal)



Input/Output Latch

- Loss of communication (time out) will latch the IO status until communication is re-established (an on or high signal will remain on with loss of communication)

Time Out

- Failsafe monitor of communication link
- Drives normally open relay

Transmit/Receive

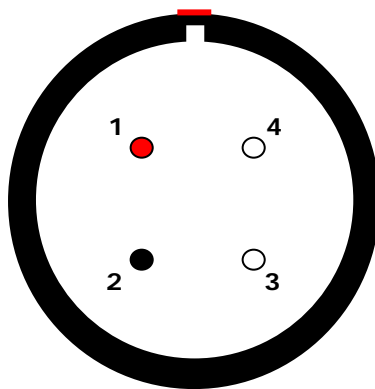
- Latency (turn around time) of ~150 msec
- Standard working range of up to 300 m (actual range may vary due to operating environment)
- 902-928 MHz FHSS (ISM band)
- 100 mW output power

Weight

- 0,55 kg (1 lb, 2 oz)

Pin Assignments

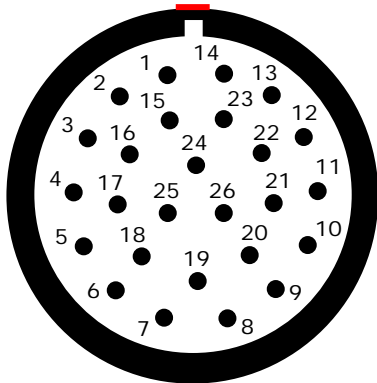
PWR 12V
(ECG.2B.304.CLL)



(panel view)

Pin	Function
1	+Power, 10-15 VDC; 1.5 W
2	-Power

INPUTS
(ECG.2B.326.CLL)

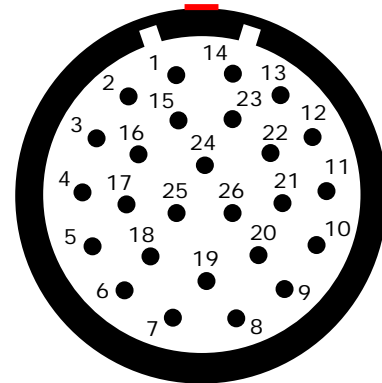


(panel view)

Pin	Function
1	+INPUT 1/Anode
2	-INPUT 1/Cathode
3	N/C
4	+INPUT 2/Anode
5	-INPUT 2/Cathode
6	N/C
7	+INPUT 3/Anode
8	-INPUT 3/Cathode
9	N/C
10	+INPUT 4/Anode
11	-INPUT 4/Cathode
12	N/C
13	+INPUT 5/Anode
14	-INPUT 5/Cathode
15	N/C
16	+INPUT 6/Anode
17	-INPUT 6/Cathode
18	N/C
19	+INPUT 7/Anode
20	-INPUT 7/Cathode
21	N/C
22	+INPUT 8/Anode
23	-INPUT 8/Cathode
24	N/C
25	N/C
26	N/C

Note: Correct polarity must be observed

OUTPUTS
(ECA.2B.326.CLL)



(panel view)

Pin	Function
1	OUT 1A
2	OUT 1B
3	+5 VDC
4	OUT 2A
5	OUT 2B
6	Common
7	OUT 3A
8	OUT 3B
9	+5 VDC
10	OUT 4A
11	OUT 4B
12	Common
13	OUT 5A
14	OUT 5B
15	+5 VDC
16	OUT 6A
17	OUT 6B
18	Common
19	OUT 7A
20	OUT 7B
21	+5 VDC
22	OUT 8A
23	OUT 8B
24	Common
25	Failsafe relay, common
26	Failsafe relay, NO

Note: Bi-directional

Mechanical Specifications

