



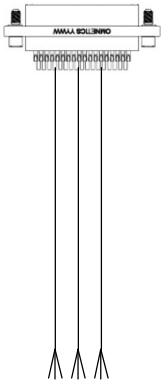
Application Diagram SLICE6 AIR-BR – System Connector Options



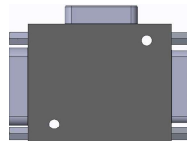
SLICE6 AIR-BR SYSTEM INPUT

- 21-p connector
- 9-36V
- 2 x Ethernet Ports
- Control Signals – ON, EVENT, START RECORD, STATUS LED

80000-04090-R
21-p System Cable Assy
-18 in length
- pigtail termination



13006-91060
SLICE6 AIR-BR Chain Module



XXXXX-XXXXX
Custom daisy-chain cable assembly
- contact DTS sales

